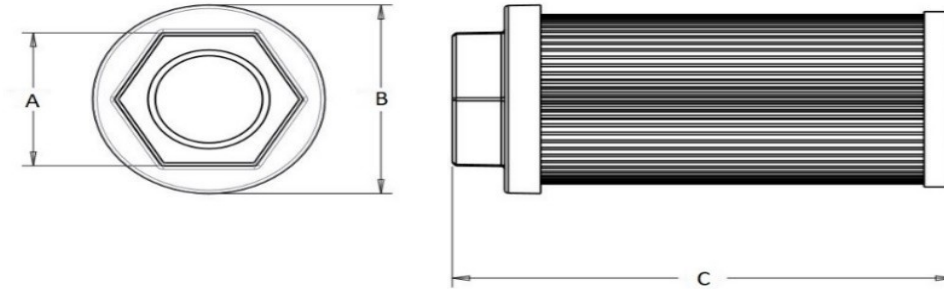


# SUCTION STRAINER-SS4

## FEATURES

- Stainless steel pleated. 149 mesh standard
- Working temperature 80° c max.
- Aluminum alloy die cast nut
- Compatible with petroleum and mineral based fluids
- Used in fluid reservoirs



MODEL NUMBER	SIZE (BSP)	FLOW LPM	SCREEN AREA (SQ. CM)	A HEX. SIZE	B NUT CAP DIA	C TOTAL LENGTH	WEIGHT KGS
SS4-02	1/4	9	187	24	46.50	90	0.104
SS4-03	3/8	13	187	24	46.50	90	0.104
SS4-05	1/2	19	226	30	46.50	105	0.105
SS4-07	3/4	25	406	35	64.50	109	0.205
SS4-10	1	40	542	46	64.50	139	0.205
SS4-15	1-1/4	60	929	51	86.50	139	0.306
SS4-20	1-1/2	80	1161	60	86.50	168	0.357
SS4-30	1-1/2	115	1393	60	86.50	200	0.407
SS4-40	2	155	1806	70	100.50	235	0.558
SS4-50	2	190	2032	70	100.50	260	0.608
SS4-75	2-1/2	290	2787	90	150.50	211	0.859
SS4-100	3	380	3677	100	150.50	272	1.009
SS4-150	3	570	4838	100	150.50	345	1.260

## ORDERING CODE: ASSEMBLY

SSA	-10	FEATURE OPTION 1 PORT THREAD	FEATURE OPTION 2 MICRONS
SERIES	SIZE		
SS4-ALUMINIUM NUT CAP	02 to 150 (REFER ABOVE)	B - BSPP (STD) N - NPT (optional)	149 - SS 100 MESH STD 125 - SS 120 MESH 100 - SS 150 MESH 074 - SS 200 MESH 063 - SS 250 MESH AND - 30 / 60 MESH

Please consult factory, for optional / special feature

**Note:** all dimensions are in mm for reference